

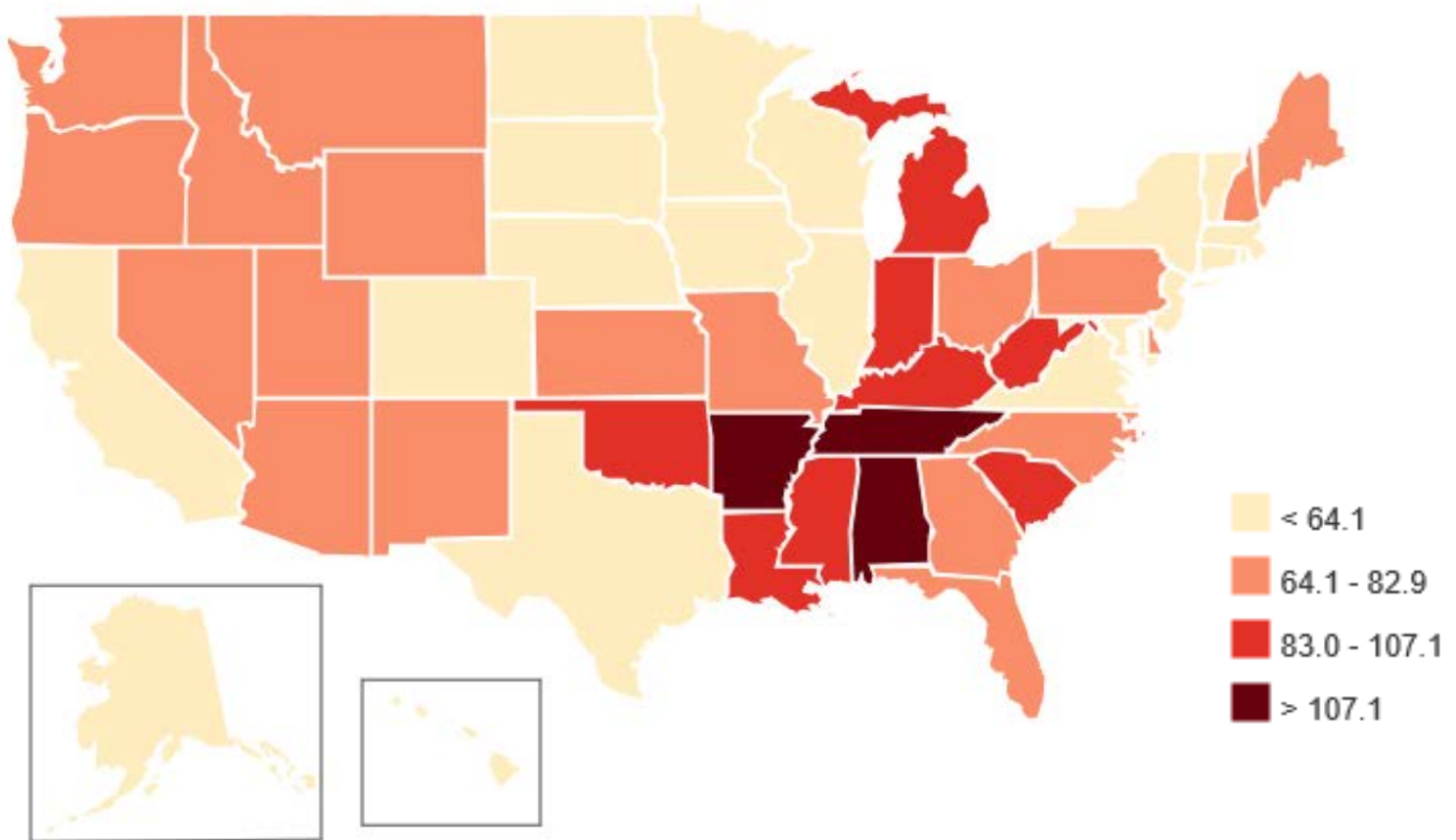


Hepatitis C Tennessee

Caring Ambassadors, Senate Briefing

May 18, 2018

U.S. Opioid Prescribing Rates per 100 U.S. Residents by State (2016)



The Syndemic of Acute HCV and Opioid Abuse (≤ 30 year olds in 4 Appalachian States)

FIGURE 1. Incidence of acute hepatitis C among persons aged ≤ 30 years, by urbanicity and year — Kentucky, Tennessee, Virginia, and West Virginia, 2006–2012

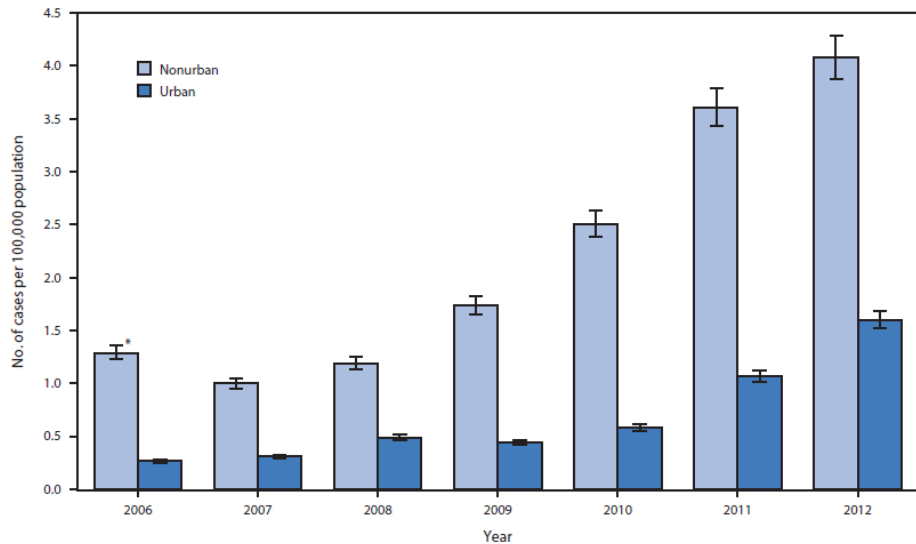
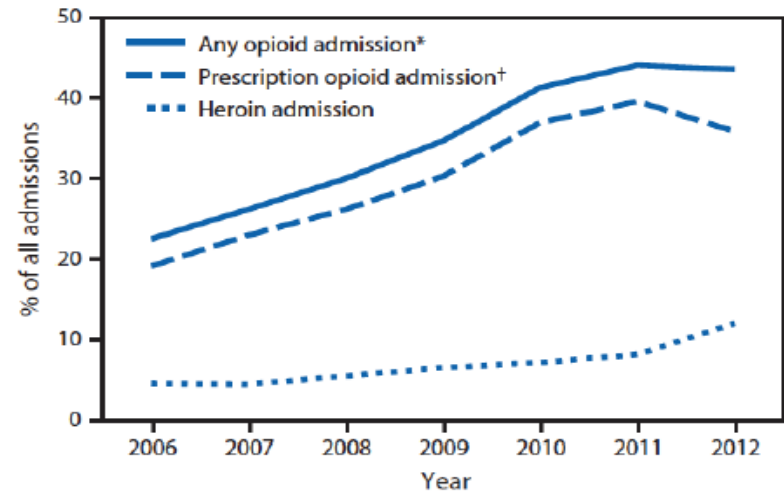
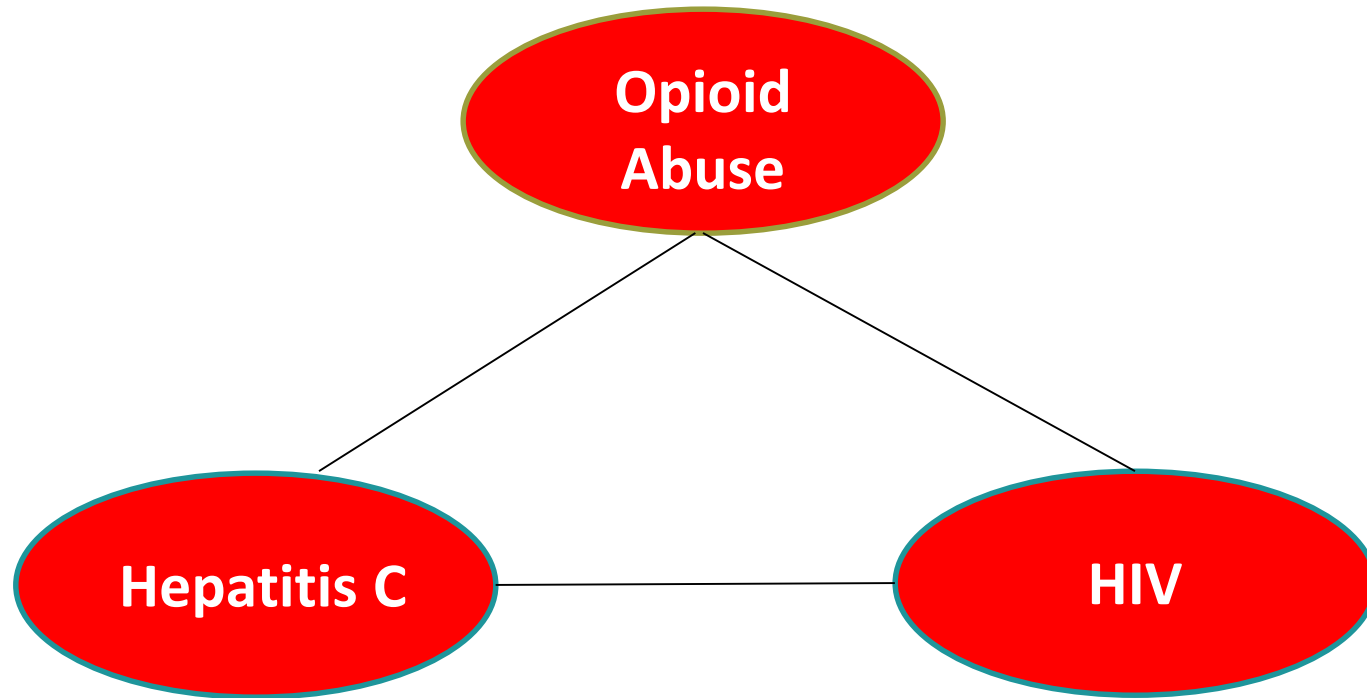


FIGURE 2. Percentage of all admissions to substance abuse treatment centers by persons aged 12–29 years (N = 217,789) attributed to the use of opioids, prescription opioids, and heroin, by year — Kentucky, Tennessee, Virginia, and West Virginia, 2006–2012

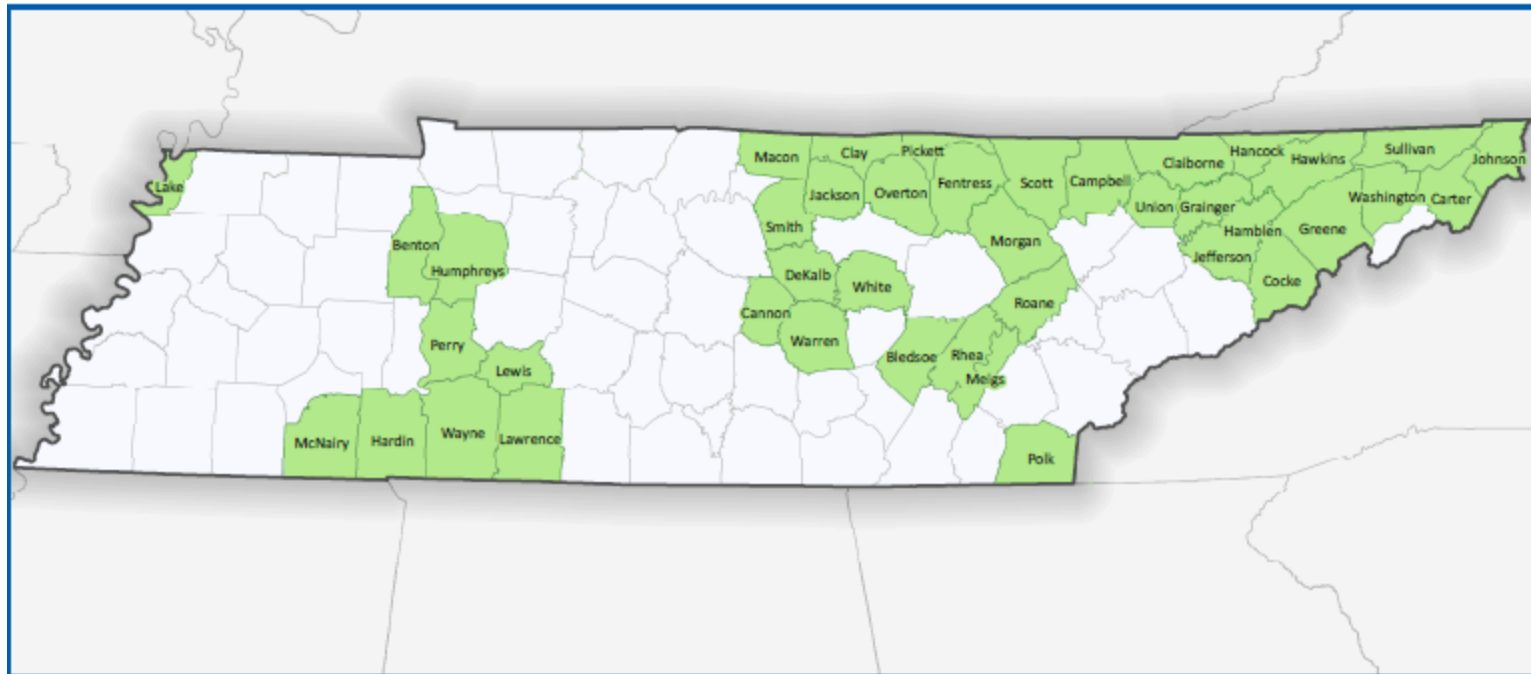


* Any opioids include heroin and prescription opioids.

Intersection of Epidemics



HIV Risk Vulnerability Assessment, Tennessee Profile, County Level



Notes: Map and Analysis provided by the Geospatial Research, Analysis, and Services Program (GRASP), Div of Toxicology and Human Health Sciences, ATSDR (2015). **Data Sources:** American Community Survey 2012-2013; DEA ARCOS 2013; NCHS/NVSS 2012-2013; SAMHSA DATA 2000 Program Info 2014.

Increasing HCV

Surveillance, Testing, and Navigation to Care

- **Surveillance**

- Outbreak Planning, Detection and Response
- Chronic HCV
- Perinatal HCV

- **Testing**

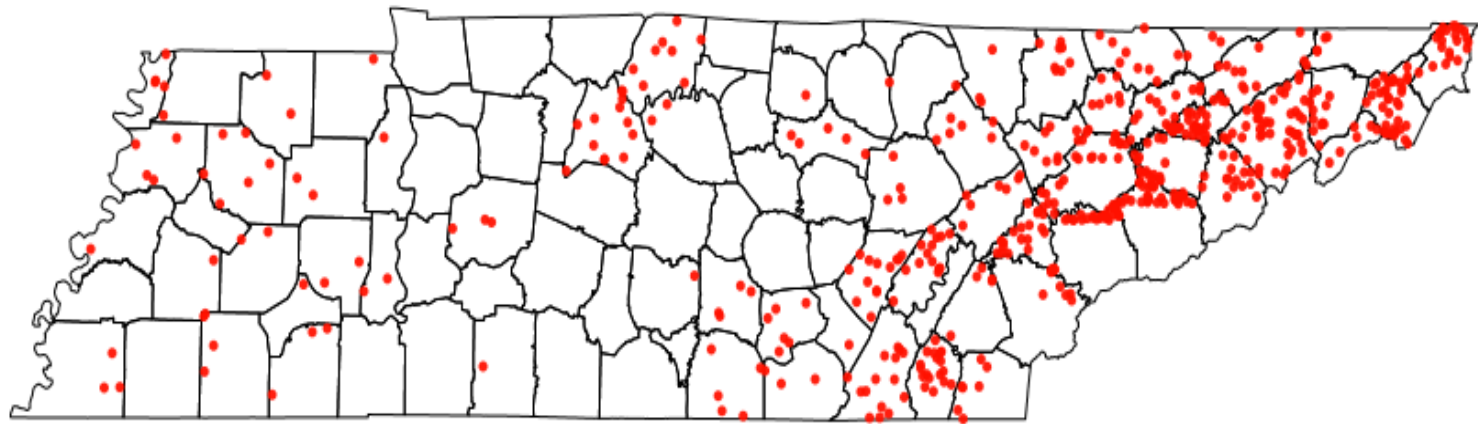
- Health Department STD Clinics
- Community Based Partners

- **Navigation to Care**

- Treatment (MH, SUD, HCV, HIV)
- Prevention (SSPs, OD, Vaccinations, Family Planning)

Reported Cases of Acute HCV in Tennessee

		<u>2011</u>	<u>2012</u>	<u>2013</u>	<u>2014</u>	<u>2015</u>	<u>2016</u>
US	case rate	0.4	0.6	0.7	0.7	0.8	1.0
	cases	1,229	1,778	2,138	2,194	2,436	2,967
TN	case rate	1.3	2.0	1.5	1.9	2.6	2.3
	cases	83	129	98	123	173	150
	rank	4 th	4 th	6 th	5 th	4 th	5 th



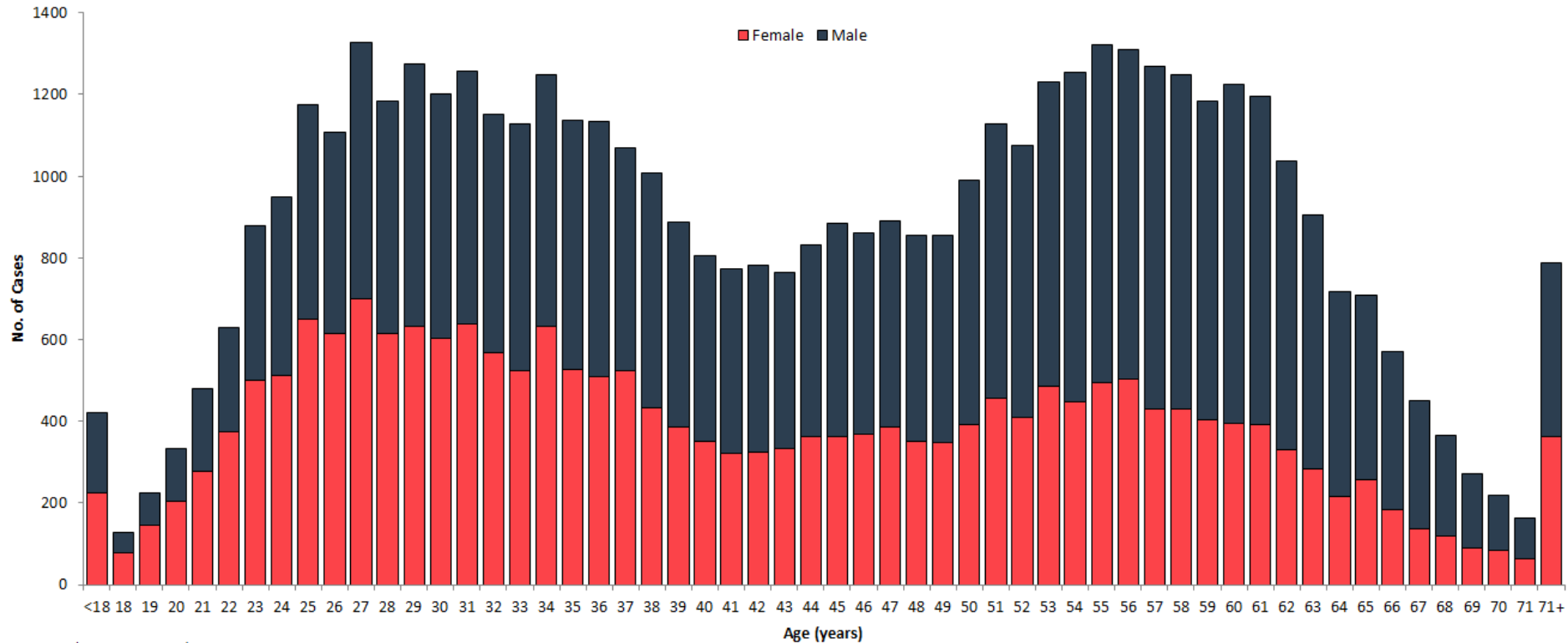
Surveillance for Chronic HCV in Tennessee

Case Classification	2013	2014	2015*	2016	2017
Confirmed	1,782 (44%)	3,385 (50%)	7,394 (59%)	10,442 (50%)	11,018 (50%)
Probable	2,234	3,421	5,244	10,496	10,992
Total (C + P)	4,016	6,806	12,628	20,938	22,010

*TDH Central office chronic HCV surveillance efforts augmented beginning 7/1/15.

Confirmed & Probable Cases of Chronic HCV in TN by Age

(7/1/15 – 12/31/17, n = 50,267)



Note: 2017 data is provisional

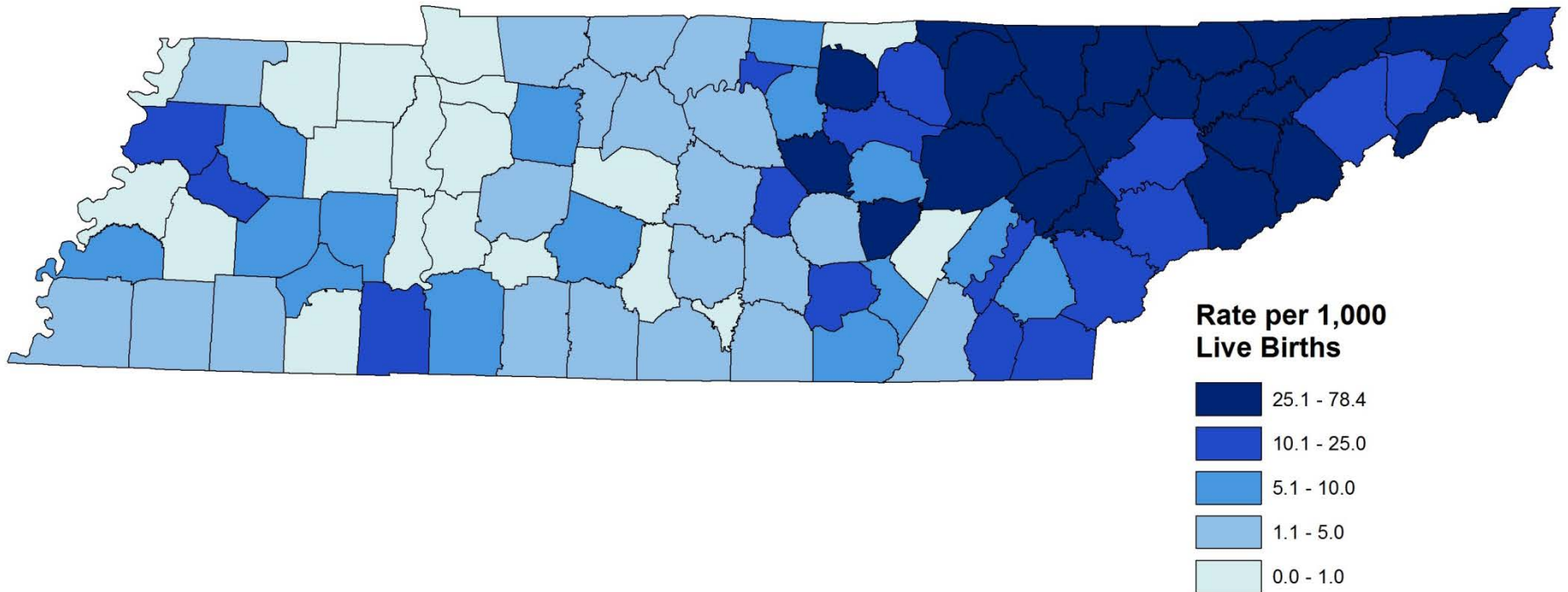
HCV Perinatal Exposures per Live Birth

(TN, 2013 – 2016)

	Ab(+) Only	RNA(+)	RNA(-)	HCV-Exposed Infants	
				Total	% Births
2013	306	392	55	698	0.9%
2014	305	570	102	875	1.1%
2015	350	686	149	1036	1.3%
2016	472	835	227	1307	1.6%
Total	1433	2483	533	3916	1.2%

(TDH NEDSS Based System (NBS), TDH Birth Statistical Files)

HCV Prevalence Among Women with Live Births (2014, TN by county)



(Patrick S et al, MMWR 2017)

HCV Testing in HD STD Clinics in TN

(4/1/17 – 3/31/18)

❖ 27,261 people tested

- 12.5% Ab (+)
 - 69.8% RNA (+)

Risk Factor	Total n (%) N = 27,261	HCV Ab (+) n (%) N = 3,407	HCV Ab (-) n (%) N = 23,854
Injection Drug Use	3,495 (12.8)	2,188 (62.6)	1,307 (37.4)
Intranasal Drug Use	6,032 (22.1)	2,123 (35.2)	3,909 (64.8)
Incarceration	7,781 (28.5)	2,206 (28.4)	5,575 (71.7)
Non-Professional Tattoo	6,804 (25.0)	1,542 (22.7)	5,262 (77.3)
Baby Boomers	2,949 (10.8)	768 (26.0)	2,181 (74.0)
No Risk Factors Reported	13,019 (47.7)	321 (2.5)	12,698 (97.5)

Note: Risk factors are not mutually exclusive; and total %'s are by column, whereas HCV Ab+ and Ab- %'s are by row.

Increasing HCV Surveillance, Testing, and Navigation to Care

- **Surveillance**

- Outbreak Planning, Detection and Response
- Chronic HCV
- Perinatal HCV

- **Testing**

- Health Department STD Clinics
- Community Based Partners

- **Navigation to Care**

- Treatment (MH, SUD, HCV, HIV)
- Prevention (SSPs, OD, Vaccinations, Family Planning)



Thank You!